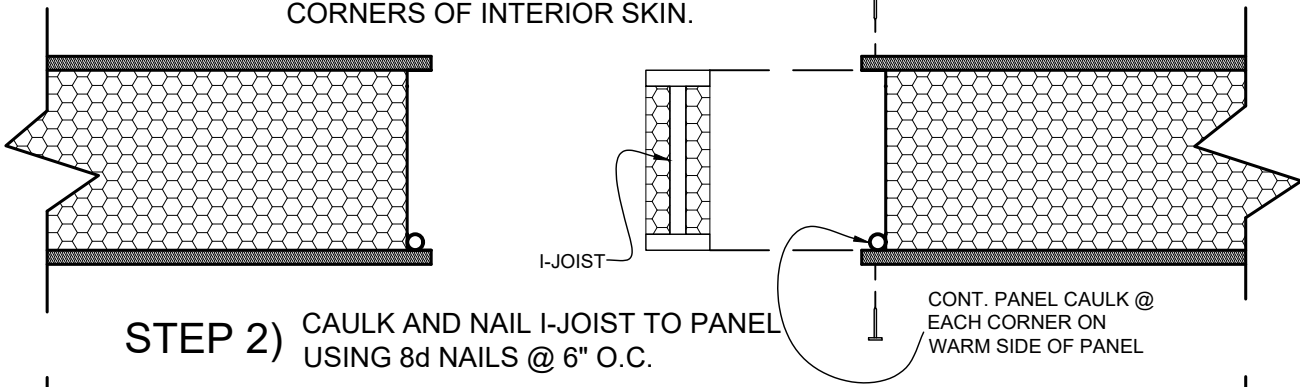


STEP 1)

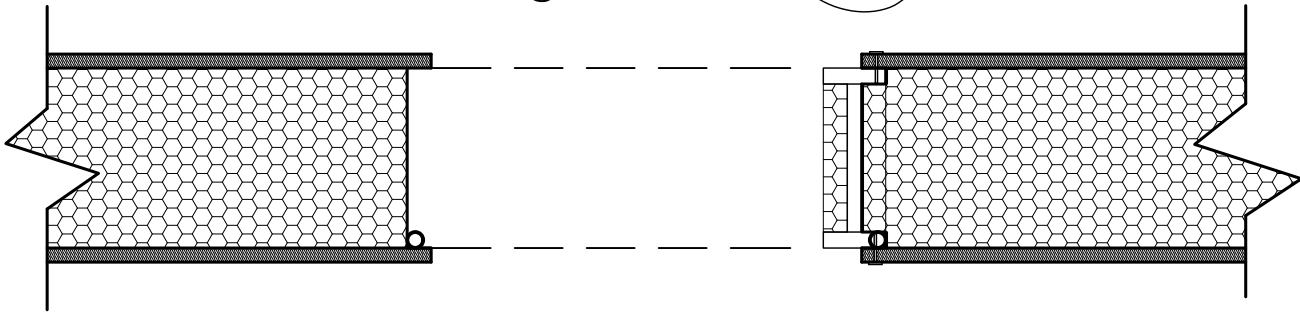
RECESS FOAM FOR CONTINUOUS I-JOIST (SIZE FOR APPLICABLE I-JOIST). RUN A CONTINUOUS BEAD OF PANEL CAULK IN CORNERS OF INTERIOR SKIN.



STEP 2)

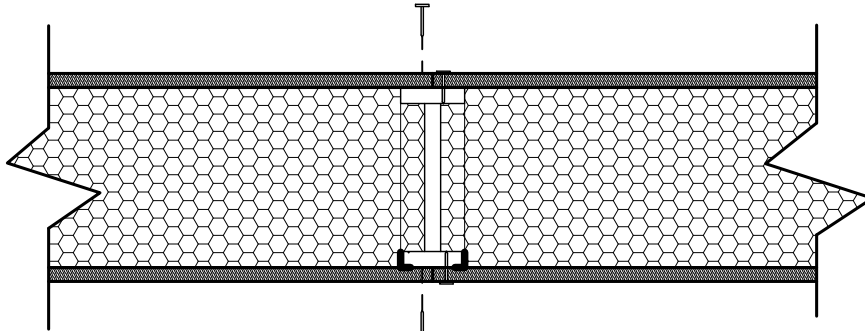
CAULK AND NAIL I-JOIST TO PANEL USING 8d NAILS @ 6" O.C.

CONT. PANEL CAULK @ EACH CORNER ON WARM SIDE OF PANEL



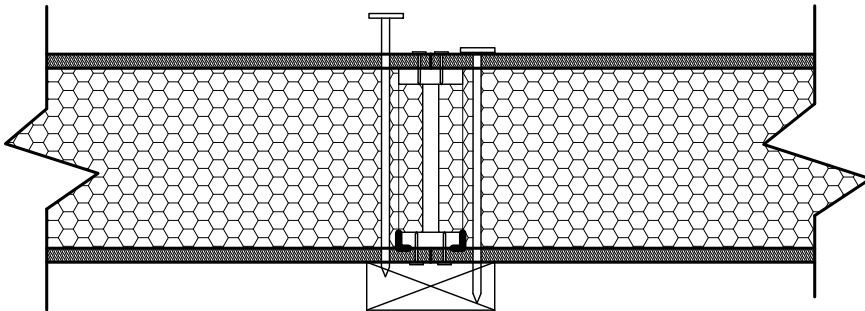
STEP 3)

AFTER NAILING I-JOIST TO FIRST PANEL SLIDE SECOND PANEL INTO PLACE OVER I-JOIST AND NAIL W/ 8d NAILS @ 6" O.C.



STEP 4)

USE PANEL SCREWS @ 12" O.C. ON BOTH SIDES OF I-JOIST OVER BEARING WALL (WHERE APPLICABLE)



FischerSIPS
INSTALLATION DETAILS

SINGLE I-JOIST SPLINE CONNECTION
FOR CEILING/ ROOF PANEL

ORG. DATE: 1/28/14
REV. DATE:

SCALE: 2"=1'-0"

DETAIL #

46A